

Instructions For Use

S7™ Safety Carton Cutter



Easily Cuts Shrink Wrap



FILM CUTTER CHANGE
Use ball point pen (above) to remove & replace film cutter unit.

Tray Cut - Three Depth Positions:



Tray Cut A Position For Maximum Blade Depth



Tray Cut B Position For Medium Blade Depth



Tray Cut C Position For Minimum Blade Depth

Blade/Guard Activation System



UKH-545 Safety Holster & CL-36 Coiled Lanyard Available

AMBIDEXTROUS - For Right & Left Handed Users

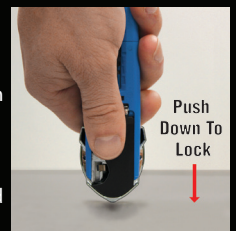


BLADE CHANGE

1. Open blade compartment by pressing down on tab as indicated on the back of knife; slide forward and then raise up.
2. Remove USED blade and dispose of safely.
3. Remove a NEW blade with thumb and index finger from storage compartment.
4. Place NEW blade on slider by aligning the cut-outs of blade to the slide tabs.



5. For left-hand use place sharp side of blade to the left and for right-hand use place sharp side of blade to the right.
6. Rotate blade storage compartment down to close.
7. Holding the blade storage compartment in place with either your thumb or index finger, push front of knife down on a hard surface to LOCK (see photo at right).



Blade Change
Use only S Series replacement blades:
SP-O17 or SPD-017



PHC
PACIFIC HANDY CUTTER®

Working Safe Everyday.™